

VENUES

HOSTCO

The Holme Building

Within the beautiful grounds of the University of Sydney, the Holme Building, dating from 1913, is steeped in story and heritage. A wow-worthy venue, brimming with character and charm, the building and spaces are one-of-a-kind. Whether you're looking for an intimate or expansive venue, we've got the perfect home for your event.





Capacity

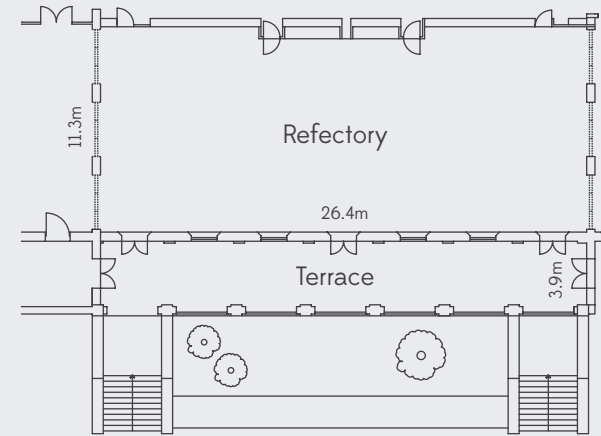
Banquet	220
Cabaret	160
Classroom	120
Theatre	320
Cocktail	500

Room Specifications

Floor Area	298m ²
Length	26.4m
Width	11.3m
Height	8.2m

Facilities

High speed Wi-Fi
Data projector
Lectern with microphone
Lapel microphone
In-house PA System



Refectory

A setting with sky-high ceilings, French windows, heritage wood panelling and an impressive feature mural to get your guests talking.

With a floor area of 298 square meters, this space can hold from 220 guests banquet-style, to 500 in a cocktail setup. Keep guests comfy with temperature control and amplify your event with all the mod-cons including, high-speed Wi-Fi, data projector, lectern with mic, lapel mic and an in-house PA system.



Capacity

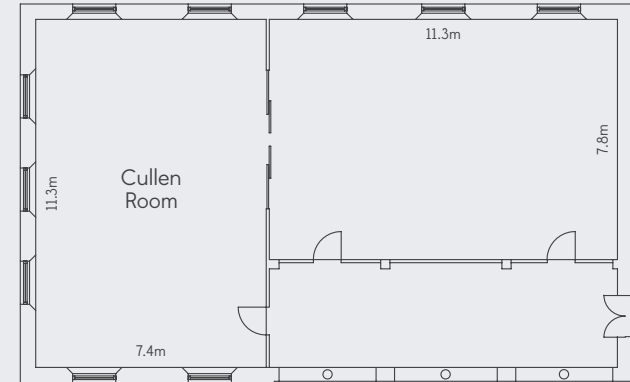
Banquet	90
Cabaret	56
Classroom	51
Boardroom	25
Theatre	140
Cocktail	150

Room Specifications

Floor Area	171m ²
Length	18.7m
Width	7.8m / 11.3m
Height	4m

Facilities

- High speed Wi-Fi
- Data projector
- Lectern with microphone
- Lapel microphone
- In-house PA System



Cullen Room

This naturally light room flows onto a sunny terrace overlooking the idyllic Cottage Lawns. Brilliant for business events – conveniently split it into two areas for versatility.

With a Floor Area of 171 square meters, this space can hold from 90 guests banquet-style, to 150 in a cocktail setup. Keep guests comfy with temperature control, and amplify your event with all the mod-cons including, high-speed Wi-Fi, data projector, lectern with mic, lapel mic and an in-house PA system.



Capacity

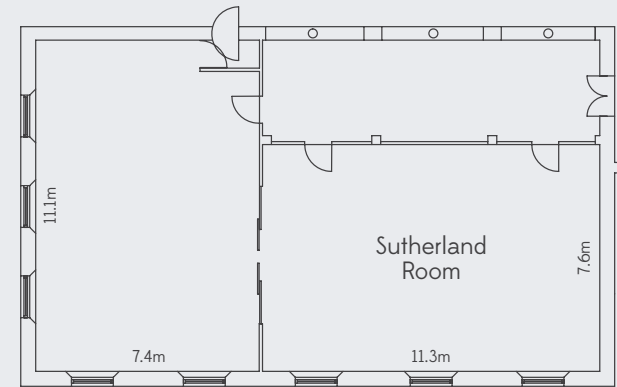
Banquet	90
Cabaret	56
Classroom	51
Boardroom	25
Theatre	140
Cocktail	150

Room Specifications

Floor Area	168m ²
Length	18.7m
Width	7.6m / 11.1m
Height	3.5m

Facilities

High speed Wi-Fi
Data projector
Lectern with microphone
Lapel microphone
In-house PA System



Sutherland Room

This unique space can be set up to suit any occasion and divided into distinct areas to suit the flow of your event.

With a Floor Area of 168 square meters, this space can hold from 90 guests banquet-style, to 150 in a cocktail setup. Keep guests comfy with temperature control, and amplify your event with all the mod-con including, high-speed Wi-Fi, data projector, lectern with mic, lapel mic and an in-house PA system.



Capacity

Banquet	18
Boardroom	18
Cocktail	25

Room Specifications

Floor Area	55m ²
Length	7.3m
Width	7.5m
Height	4.5m

Facilities

- High speed Wi-Fi
- Portable television available
- Portable AV available



Chancellors Room

Regal yet event-friendly, this space has a warm personal feel. With arched French windows and elegant chandeliers, it's a classic venue that's all character and class.

With a Floor Area of 55 square meters, this space can hold from 18 boardroom-style, to 25 in a cocktail setup. This dedicated space offers outstanding catering options and high-speed Wi-Fi with great coffee and a modern cafe close by.



Capacity

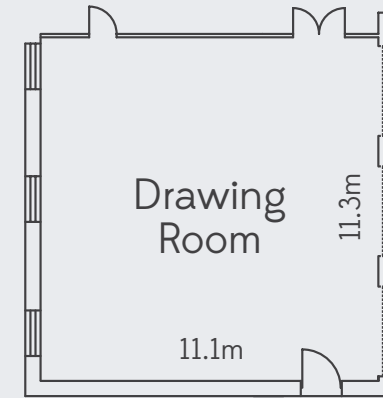
Banquet	70
Cabaret	56
Theatre	70
Cocktail	120

Room Specifications

Floor Area	125m ²
Length	11.1m
Width	11.3m
Height	4.5m

Facilities

High speed Wi-Fi
Portable television available
Portable AV available



Drawing Room

Intimate and event-friendly, this space is warm and welcoming. With classic panelling and exposed beams, it's an elegant venue filled with character.

With a Floor Area of 125 square meters, this space can hold from 70 guests banquet-style, to 120 in a cocktail setup. Keep guests comfy with temperature control, and amplify your event with high-speed Wi-Fi.



Capacity

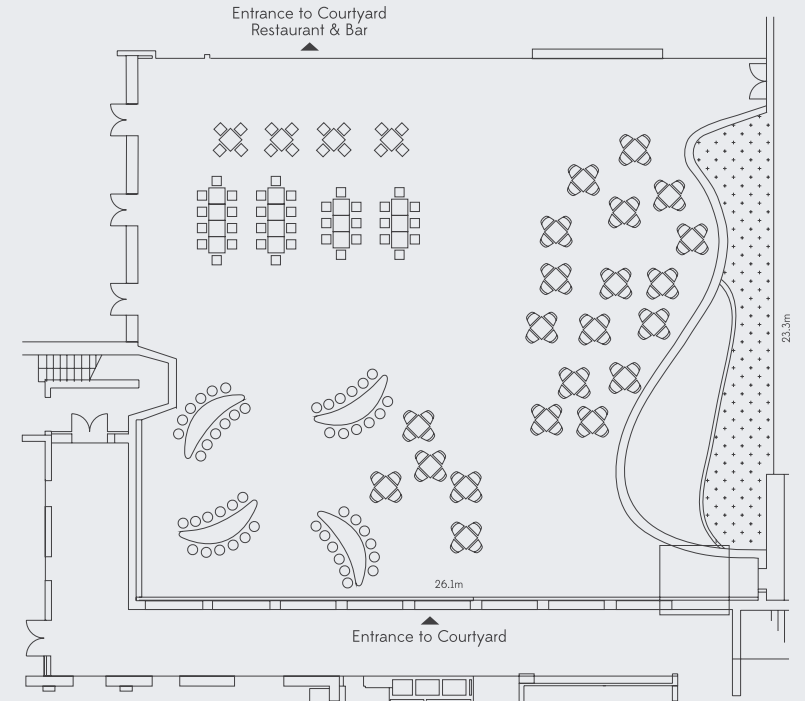
Banquet	200
Cocktail	500

Room Specifications

- Floor Area 608m²
- Length 23.3m
- Width 26.1m

Facilities

- High speed Wi-Fi
- In-house PA system available
- Two televisions available



Courtyard

Established trees, abundant light and grand arches make this a unique alfresco space. Sip cocktails and mingle under the outdoor lights.

With a Floor Area of 608 square meters, this space can hold from 250 guests banquet-style, to 500 in a cocktail setup. This dedicated space offers outstanding catering options and a bar with great staff. This space is also perfect for hosting an after-hours event.



Capacity

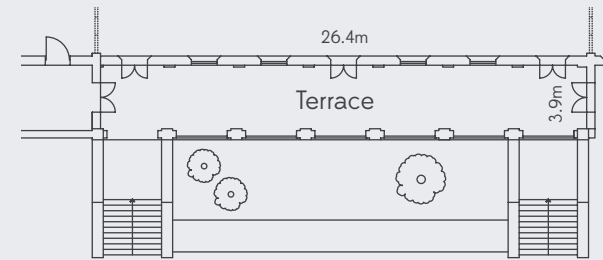
Long Table	80
Cocktail	100

Room Specifications

Floor Area	102m ²
Length	26.4m
Width	3.9m

Facilities

High speed Wi-Fi
Portable AV available



Colonnade & Terrace

A Mediterranean styled space with grand arches, the Colonnade is a stunning alfresco space, perfect for cocktails. Upstairs, the Mediterranean vibes continue to the Terrace, creating a unique space for a long table affair.

With a Floor Area of 102 square meters, this space can hold 80 guests at a long table, to 100 in a cocktail setup.



Capacity

Ceremony	50
Cocktail	150

Lawn 1 Specifications

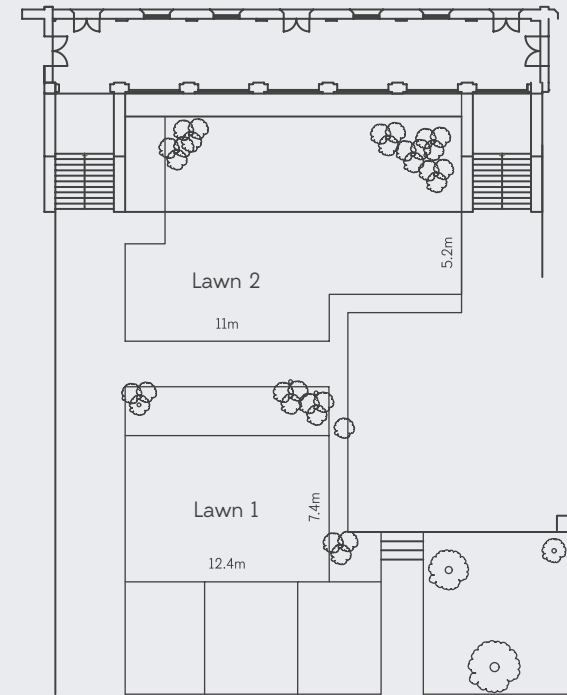
Floor Area	91.7m ²
Length	12.4m
Width	7.4m

Lawn 2 Specifications

Floor Area	69.5m ²
Length	11m / 7.1m
Width	5.2m / 5.2m

Facilities

High speed Wi-Fi
Portable AV available



Cottage Lawns

Positioned in front of the heritage Holme Building, our Cottage Lawns are a unique outdoor space. Split in two lawns with manicured hedging, there's the option to use one, or both, for a variety of occasions, from cocktail hour to lawn games.

With a total area of 161.2 square meters, this space can hold from 50 guests theatre-style for a ceremony in the larger lawn, to 150 in a cocktail setup across both lawns.



Catering

We're all about versatile menus that bring the yum – every time. Wherever the location of your event, we deliver fresh contemporary catering that does the local produce proud. From canapes to seated, we'll flavour your occasion.

Mindful of waste, we encourage sustainability and use fresh seasonal, locally-sourced produce. To add garnish to the goodness, we grow our own herbs. Our food is flexible, so you can select and savour the dishes that make your mouth water, or we can tailor a package to suit your individual needs.

For booking information
and site visits contact our
Event Specialists.

info@hostcosydney.com
02 9563 6245
www.hostcosydney.com

